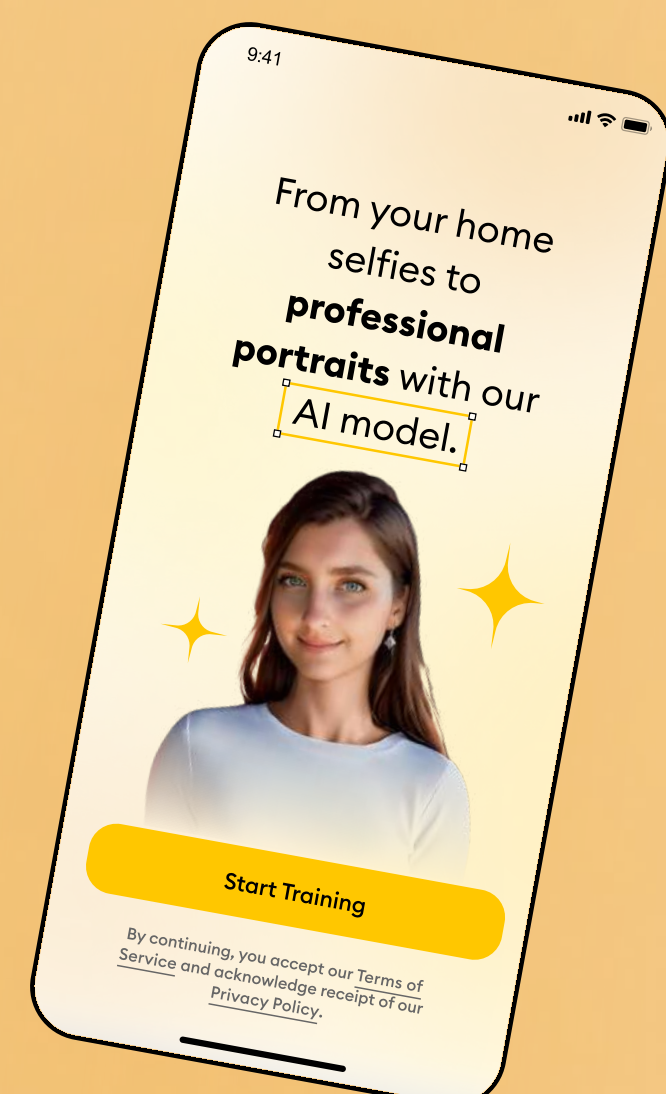


Retake

Technology

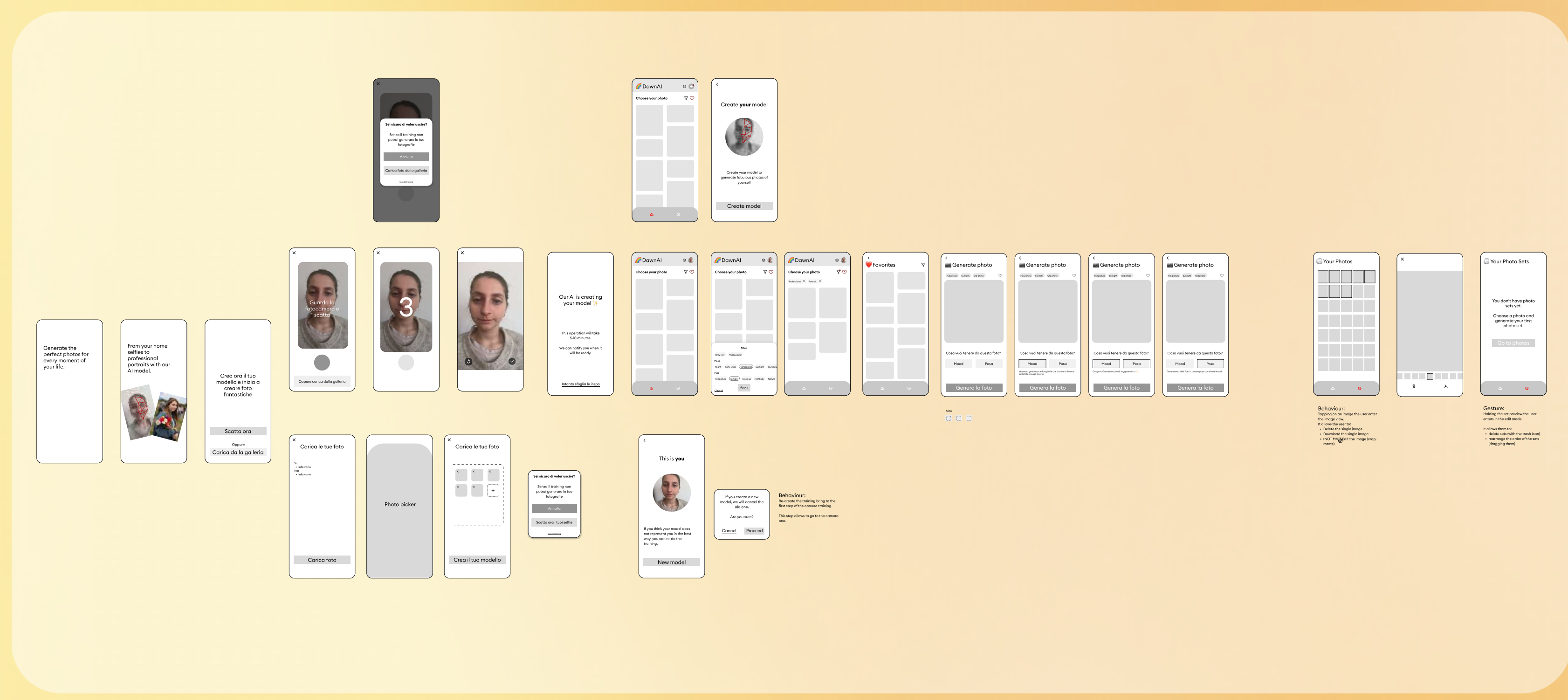
The new AI technology of the company allows the user to create AI-generated realistic photos of themselves.

I was required to design a brand new app to exploit this technology.



Wireframes

After setting some requirements and made some assumption based on the data we already have on potential users, I designed some wireframe to define the structure of the app.



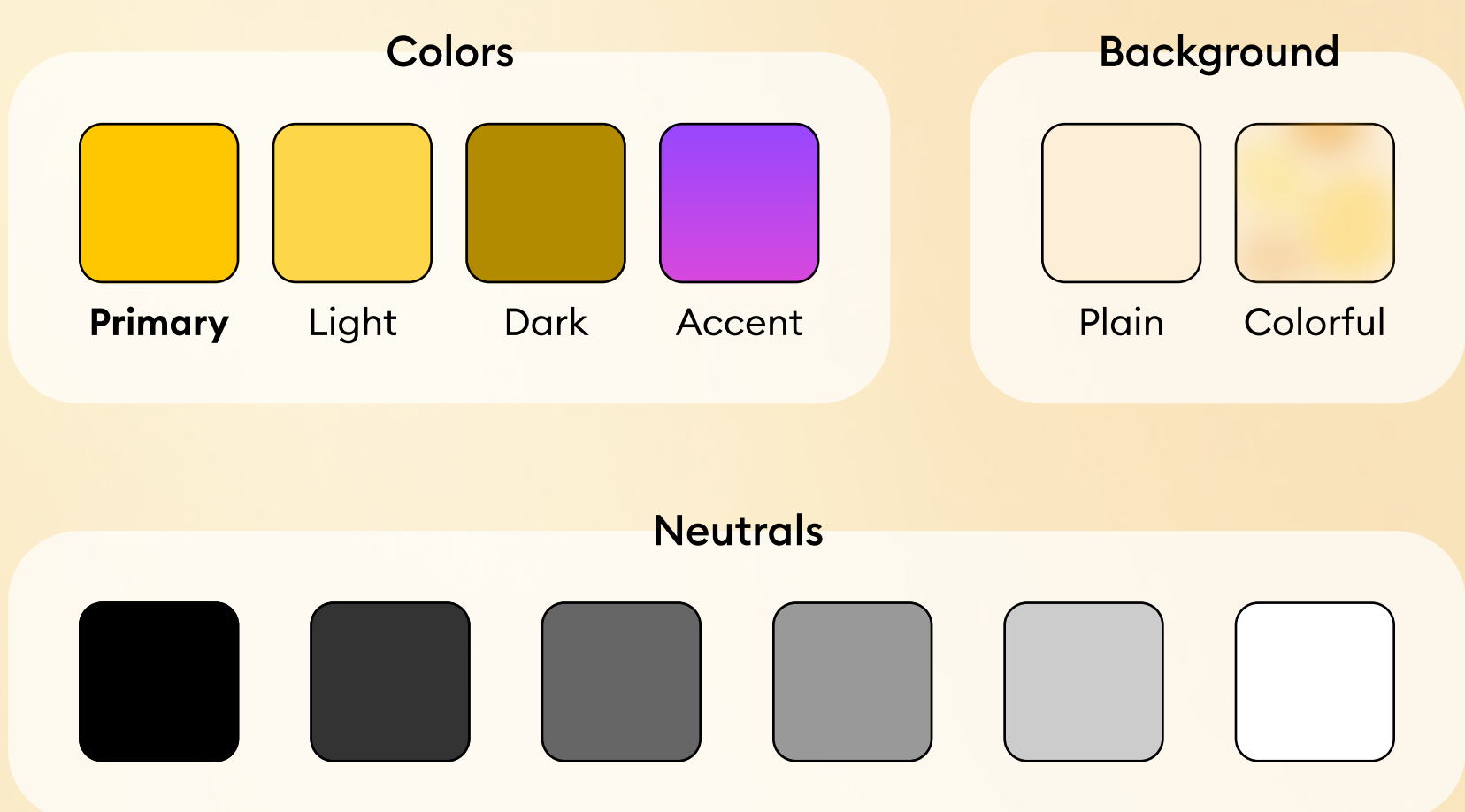
Style choices

Moodboard

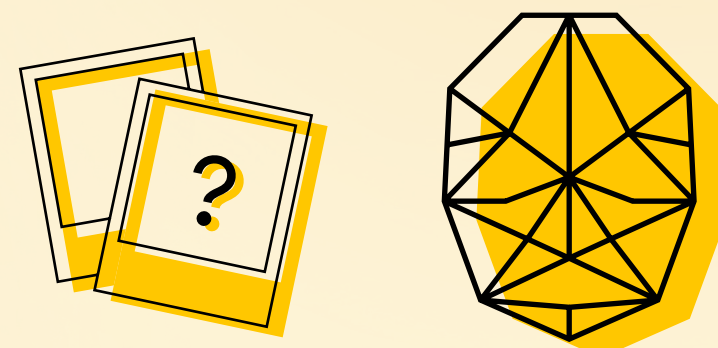


- Main groups of concepts:
- Professional photography, selfie, fun
 - Technology, AI, face recognition

Palette



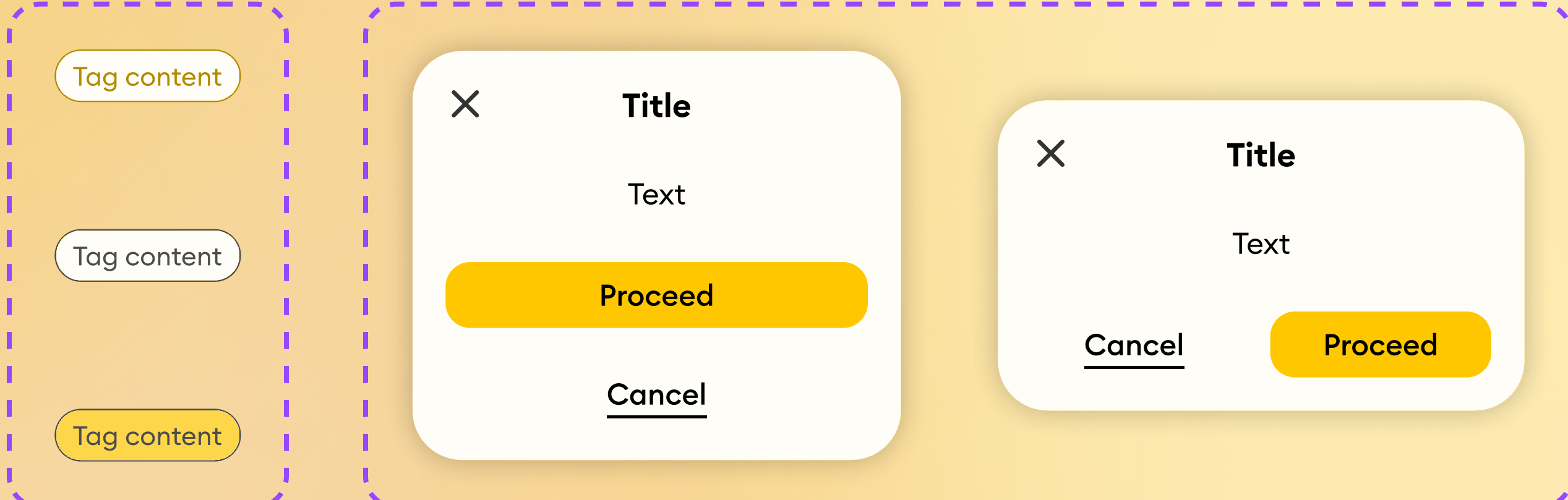
Illustrations



I also design a few illustrations to give more personality to the design.

Design System

I created different components in Figma following the principles of the atomic design and designing all the needed variants.

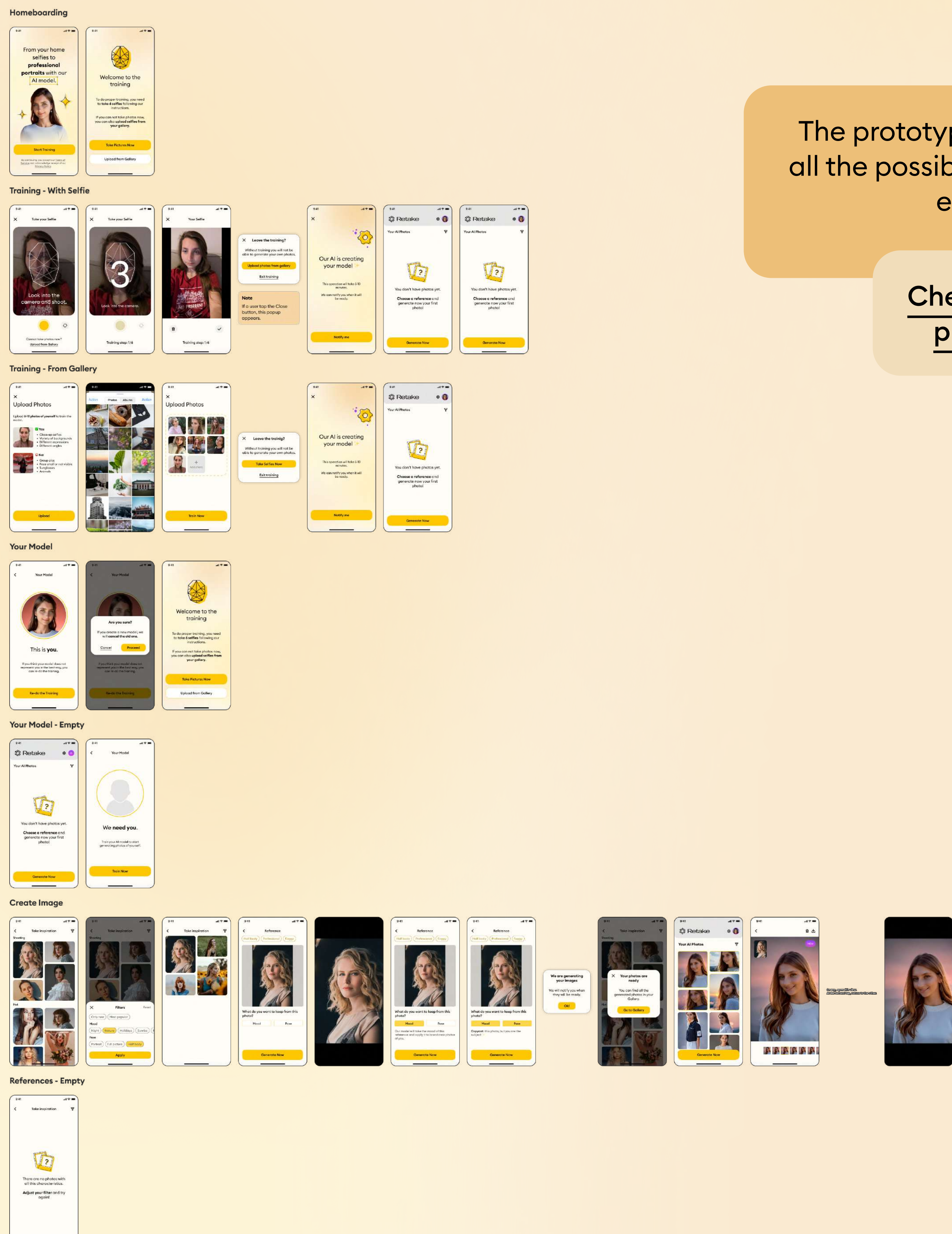


I used different types of variants to allow other designer to re-use the components without difficulties.

Example:



Mockup & Prototyping



The prototype considers all the possible flows and empty states.

[Check out the prototype](#)